



Building on the prestige of our company's ISO 9001:2015 certification, Temp-Pro is poised to deliver the absolute best quality and craftsmanship for every one of our industrial products.

Wind Power Plants

Temp-Pro Inc is a leader in the industry, supplying temperature sensor requirements for the most demanding industrial applications.

We specialize in the following products:

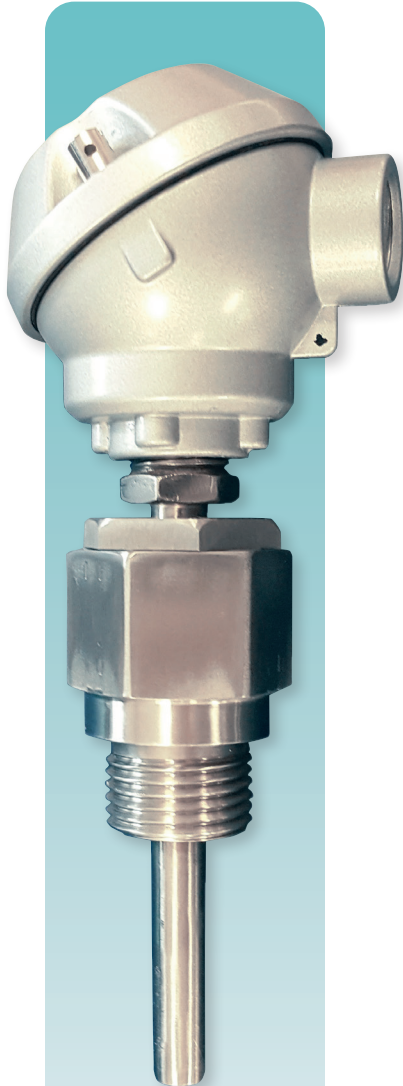
- ▶ Temperature Sensors
- ▶ Electrical Enclosures
- ▶ Wiring Harness & Cable Assemblies
- ▶ Thermowells
- ▶ Electro-Mechanical Assembly
- ▶ Miscellaneous Instruments & Accessories

POWER • OIL & GAS • RENEWABLE ENERGY • AEROSPACE • FOOD & BEVERAGE • AUTOCLAVE • PETROCHEMICAL
PHARMACEUTICAL • WATER & WASTE WATER • HVAC • INCINERATION • FURNACE • PLASTICS • CEMENT • DEFENSE

Phone: **413-584-3165** | Toll Free: **800-991-9093** | Fax: **413-586-3625** | Email: **sales@temp-pro.com**
Temp-Pro.com | 200 Industrial Drive | Northampton, MA 01060

Temp-Pro Inc is a leader in the industry, supplying temperature sensor requirements for the most demanding industrial applications.

Temperature Sensors for the Wind Industry



Screw-in RTD Sensors - Stainless steel or other

Type	Flat, Continuous, Stepped, Variety of designs available
Range	RTD: Pt, Ni, Cu Thermocouple: Type J, K, T, E
Unique Features	Single or double RTD probe Available with transmitter
Accuracy	RTD: Class A, B according to IEC60751
Operating Temp.	Varies: -50°C to 200°C, Available up to 220°C
Dimensions (in.)	Custom dimensions available
Typical Apps	Monitor Rotor, Gears, Transformer Station, Liquids & Gases

Embedment Probe - Stainless steel or tin plated copper case

Type	Miniature Design
Range	RTD: Pt, Ni
Unique Features	For use where space is limited Simple Installation Custom Designs Feedthrough Options
Accuracy	RTD: $\pm 0.12\%$, $\pm 0.36\%$ and $\pm 0.5\%$ at 0°C
Operating Temp.	-50°C to 250°C (-58°F to 482°F)
Dimensions (in.)	Case specific dimensions
Typical Apps	Bearing monitoring

Bolt-On Probe - Threaded bolt, tube style, flat style

Type	Quick Response Time
Range	RTD: Pt, Ni
Unique Features	For use where space is limited Retro Fitting Simple Installation Custom Designs
Accuracy	DIN Class B (IEC 75) and $\pm 0.5\%$ at 0°C
Operating Temp.	-50°C to 250°C (-58°F to 482°F)
Dimensions (in.)	Case specific dimensions
Typical Apps	Rotor, Climate Control, Generator

REQUEST A QUOTE FROM TEMP-PRO TODAY

Phone: **413-584-3165** | Toll Free: **800-991-9093** | Fax: **413-586-3625** | Email: **sales@temp-pro.com**
Temp-Pro.com | 200 Industrial Drive | Northampton, MA 01060

Temp-Pro Inc is a leader in the industry, supplying temperature sensor requirements for the most demanding industrial applications.

Temperature Sensors for the Wind Industry



Stator Sensors - G11 epoxy glass laminated, Class F or H

Type	Rigid flat, Slot sensor, Cable or leadwire options
Range	RTD: Pt, Ni, Cu
Unique Features	Extended sensitive length Single or dual elements Calibration available
Accuracy	RTD: Class A, B according to IEC60751
Operating Temp.	Max. temperature: Class F, 155°C; Max. temperature: Class H, 180°C Available up to 200°C
Dimensions (in.)	Custom dimensions available
Typical Apps	Monitor temperature between stator coils, electric motors, generators

Transformer/Bearing Probe - Pt element embedded into Stainless tube

Type	Push-in probe
Range	RTD: Pt100
Unique Features	2-wire, 3-wire, 4-wire circuit Various length of cable
Accuracy	Cl.B according to IEC 751
Operating Temp.	-40°C to 350°C (-40°F to 662°F)
Dimensions (in.)	ø.125, .188, .250 (Custom cable lengths available)
Typical Apps	Temperature monitoring in low voltage Transformer windings, Bearing monitoring

Bearing Sensors - Copper alloy tip; Stainless steel, isolated stainless steel or epoxy glass case

Type	Rigid sheath, Tip sensitive, Cable/leadwire options
Range	RTD: Pt, Ni, Cu
Unique Features	Cut-to-length Copper tip for fast time response Assemblies with fluid seal and spring loading Single or dual elements
Accuracy	RTD: Class A & B according to IEC60751
Operating Temp.	-50°C to 250°C (-58°F to 482°F)
Dimensions (in.)	Custom lengths, Standard sheath diameters: 125 & .188
Typical Apps	Bearing monitoring

REQUEST A QUOTE FROM TEMP-PRO TODAY






Phone: **413-584-3165** | Toll Free: **800-991-9093** | Fax: **413-586-3625** | Email: **sales@temp-pro.com**
Temp-Pro.com | 200 Industrial Drive | Northampton, MA 01060

Temp-Pro Inc is a leader in the industry, supplying temperature sensor requirements for the most demanding industrial applications.

Temp-Pro's embedment sensors are designed for use in the Rotating Equipment and Turbomachinery industries. Our embedment sensors provide critical temperature indication of bearing conditions, thus allowing machine shutdown and maintenance before catastrophic failures.

Temp-Pro's Miniature Bearing Temperature Sensors provide a reliable, simple and cost-effective method to monitor bearing temperatures.

Embedment RTDs and Thermocouples Maximum Number of Conductors and Wire Gauge

	Case Style A		Case Style B		Case Style C		Case Style D		Case Style E	
SENSOR TYPE										
	Case L: 0.250" Case Ø: 0.275"		Case L: 0.250" Case Ø: 0.188" Flange Ø: 0.250"		Case L: 0.300" Case Ø: 0.125"		Case L: 0.300" Case Ø: 0.080"		Case L: 0.250" Case Ø: 0.250"	
	Single	Dual	Single	Dual	Single	Dual	Single	Dual	Single	Dual
Platinum, 100 $\Omega \pm 0.12\%$ at 0°C (Meets EN60751, Class B) ¹	3 Wire 24 AWG	6 Wire 24 AWG	3 Wire 24 AWG	6 Wire 24 AWG	3 Wire 26 AWG	NA	3 Wire 30 AWG	NA	3 Wire 24 AWG	6 Wire 24 AWG
Thermocouple (E, J, K, T)	2 Wire 24 AWG	4 Wire 24 AWG	2 Wire 24 AWG	4 Wire 24 AWG	2 Wire 26 AWG	NA	2 Wire 28 AWG	NA	2 Wire 24 AWG	4 Wire 24 AWG

¹ α = 0.00392 °C - Contact Factory

Bearing (Embedded) Thermocouples & Pt100 Sensors

Standard assemblies are easy to install in drilled holes for general temperature sensing applications, whereas the spring loaded 'top hat' style assemblies, are inserted into a milled hole with a retaining clip to compress the spring and retain the sensor against the surface being monitored.

Specifications

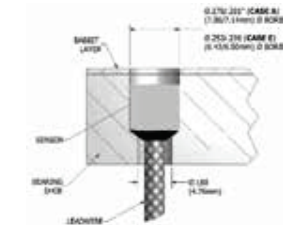
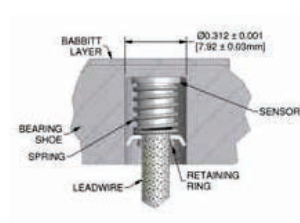
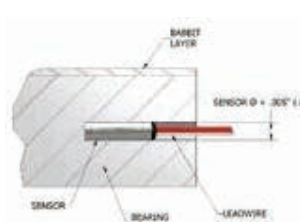
Temperature Range: -50 to 260°C (-58 to 500°F).

Case Materials: 316 SS; Copper; Nickel Plated Copper; Tin Plated Copper, Brass.

Lead Wires: Stranded silver plated copper conductors with PTFE insulation and optional stainless steel overbraid (one sleeve covers all leads).

REQUEST A QUOTE FROM TEMP-PRO TODAY

Phone: **413-584-3165** | Toll Free: **800-991-9093** | Fax: **413-586-3625** | Email: **sales@temp-pro.com**
Temp-Pro.com | 200 Industrial Drive | Northampton, MA 01060

Case Style	Installation Instructions	Dimensions
A & E	Install sensor Style A just below the babbitt layer, then puddle the babbitt metal over the sensor tip and smooth. Style E is bonded with epoxy near the babbitt face for best temperature measurement reading.	
B	This sensor is designed with a spring and retaining ring allowing spring loading. Slide the spring and ring over the leads, insert the sensor tip into a milled hole, and push down on the retaining ring to compress the spring and secure the sensor.	
C & D	Bond with epoxy inside the small bearing shoes. Locate near the babbitt face for best temperature measurement reading.	

Part Number	Description	Illustration
67P-0096 67P-1084	Spring Length 0.50 Spring Length 1.25	
67P-0097	Retaining Washer	
67P-1085	Retaining Ring	

REQUEST A QUOTE FROM TEMP-PRO TODAY

Phone: **413-584-3165** | Toll Free: **800-991-9093** | Fax: **413-586-3625** | Email: **sales@temp-pro.com**
Temp-Pro.com | 200 Industrial Drive | Northampton, MA 01060

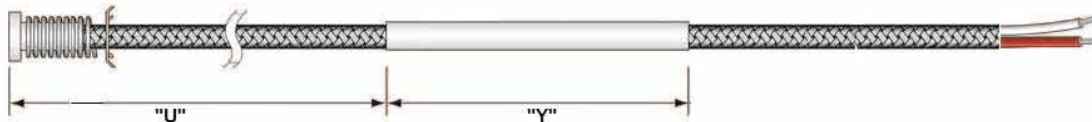
Order Chart

	Sensor Type	Single or Dual	Case Style	Case Material	Junction	Options	Header Pass Through (Leave blank if not req'd)	Header Pass Through Location "U"
MBTS								
1	Pt100 385	RTD 2W	A	316ss	Grounded	Stainless Steel Overbraid	Y ____	U ____
2	Pt1000 385	RTD 2x2W	B	Copper	Ungrounded	Spring & Clib Style "B" Only	Y (X.XX)	U (X.XX)
3	N120 672	RTD 3W	C	Ni Plated Cu	N/A - RTD	Beryllium Copper Retainer Style "B" Only		
4	Cu10 427	RTD 2x3W	D	Sn Plated Cu				
5	D100 392	RTD 4W	E	Brass				
6	J	RTD 2x4W						
7	K	T/C Single						
8	E	T/C Dual						
9	T							

Example

MBTS-1-3-2-1-3-2-40

Feedthroughs



Overview

Feedthroughs provide an oil-tight-seal where a cable exits a machine housing. The stainless steel tube is epoxy filled and each wire is sealed to the individual conductor. This prevents wicking of oil inside the wires as well as leakage around the wire insulation.

Feedthroughs can be ordered as an accessory to any sensor in this guide. When ordering feedthroughs with case style B bearing sensors, the spring and retaining ring are automatically included.

Specifications

Materials: 316 Stainless Steel with epoxy potting

REQUEST A QUOTE FROM TEMP-PRO TODAY

Phone: **413-584-3165** | Toll Free: **800-991-9093** | Fax: **413-586-3625** | Email: **sales@temp-pro.com**
Temp-Pro.com | 200 Industrial Drive | Northampton, MA 01060

We specialize in the following products:



TEMPERATURE SENSORS

Temp-Pro designs and manufactures temperature sensor products to include Thermocouples, resistance temperature devices (RTDs), thermistors, and associated components and hardware.



THERMOWELLS

Temp-Pro designs and manufactures thermowells for industry-specific or functional applications, but can also be designed and manufactured to meet customer-specific requirements.



ELECTRICAL ENCLOSURES

Temp-Pro combines functionality with quality in all of our industrial enclosure products, including simple junction, multi-function, multi-component control panels, or fully assembled electrical enclosures.



ELECTRO-MECHANICAL ASSEMBLY

Temp-Pro offers a variety of electro-mechanical fabrication services—from simple sub-assemblies to complex systems including Local Instrument Enclosures (LIE), Local Instrument Racks (LIR) & Local Gauge Boards/Panels for specialized industrial applications.



WIRING HARNESS & CABLE ASSEMBLIES

Temp-Pro has a comprehensive offering of wiring harness and cable assemblies to include build-to-print wiring harnesses and electronic, as well as mechanical and structural assemblies.



MISCELLANEOUS INSTRUMENTS

Temp-Pro manufactures a wide-variety of temperature measurement instruments to include Bimetal Thermometers, Gas Actuated Thermometers, Pressure Gauges, and Transmitters.



ACCESSORIES

Temp-Pro's accessories include RTD and thermocouple heads, terminal blocks, plugs, jacks, wire and related elements—including fixtures, fittings, insulators, pipe bushings, nipples, and flanges, among many more.

Temp-Pro also offers extended services to support our product line:
**Wake Frequency Calculations • Application Assistance • Expediting Options
Special Packaging • Training • Calibration • Custom Design**

REQUEST A QUOTE FROM TEMP-PRO TODAY